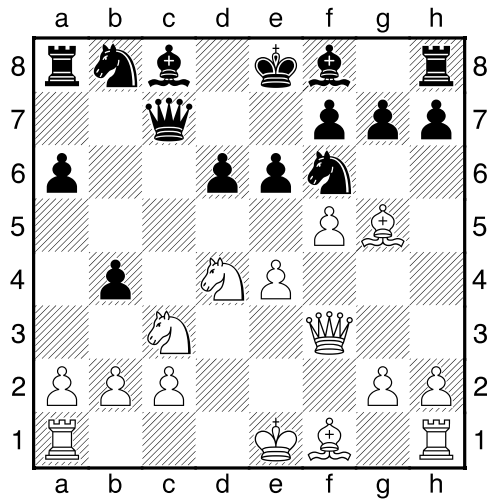


Smolkina,M. (1732) - Meise,L. (1825)

HSK Klubturnier 2005 B3 (5.5)

[ChZ]

**1.e4 c5 2.Sf3 d6 3.d4 cxd4 4.Sxd4 Sf6 5.Sc3
a6 6.Lg5 e6 7.f4 Dc7 8.Df3 b5 9.f5 b4**



**10.Sc3 b5 11.Lxb5+ Ke7 12.fxe6 fxe6
13.0-0 Kd8 14.Lxf6+ Le7 15.Lxg7 e5 16.Lxh8
Dc5 17.Lf6 Dxd4+ 18.Kh1 Lxf6 19.Dxf6+ Kc7
20.De7+ Kb6 21.Tfd1 Dxe4 22.Dxd6+ Kxb5
23.Td5+ Ka4 24.Dc5 Ld7 25.a3 1-0**